



The  
Right  
Partner





International  
Trucks & Tractors

The  
Right  
Partner

# Consolidating and strengthening

Dear customers, suppliers, partners, ITT staff and friends, This year, we achieved a record turnover of €363 million, a testament to the hard work and commitment of the entire group. This achievement was the product of effective management and continuous improvement in each and every area of our business.

2024 was a particularly challenging year, full of obstacles and uncertainty. Even so, thanks to our team's commitment, we consolidated our Case Construction Equipment import business in Spain, expanding our distribution network and strengthening our position in the market.

In the agriculture industry, our subsidiary ITT Pedro Azpeitia strategically acquired new businesses in northern Spain. Bringing in two new locations, they strengthened our presence in the region and optimized our operations to provide closer and more efficient services to our customers.

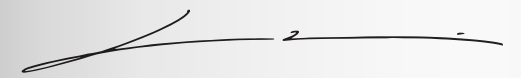
We also formally integrated Talleres Navarro Deix, a key collaborator in our transport business and now officially part of the ITT family. It is a valuable asset in our commitment to offering top-quality services with the experience and backing of our group.

In France, though we have seen difficulties in the construction industry, our agriculture business proved to be an important pillar and has allowed us to advance and position ourselves more favorably. This year, we opened a new branch in Buchy (76) and built and inaugurated a branch in Sissone (02), thereby increasing and improving our presence in the area. These achievements show our commitment and dedication to growing our business in France.

All in all, this year was positive, but also challenging. The energy and motivation exhibited by our teams was crucial in overcoming the obstacles faced. Seeing each member of ITT grow more and more aligned with our values has been, without question, one of the most rewarding aspects.

Looking ahead to 2025, we expect a year of challenges, changes and potential for uncertainty, but we are motivated and excited about the opportunities awaiting us. Thank you all for the commitment and dedication that have brought us this far. I am convinced that we will face the challenges together and take advantage of the great opportunities to come in the new year.

Thank you very much,



XAVIER DOMÈNECH MIR



Who we are



# What we do

Founded in 1878, ITT is a family-like group of 14 companies. All share the same values, a common vision, solid synergies and an entrepreneurial spirit. The group is present in four countries and has 696 employees across 46 different locations.

We are an enterprising partner that offers innovative solutions to help our customers and partners reach their goals more quickly, effectively and efficiently. We are in constant pursuit of innovation and excellence, and our solutions involve the deployment of a portfolio of products from the world's top companies in their fields. They offer best-in-class performance and reliability and unparalleled standards of service, creating memorable experiences. A perfect combination of tradition and modernity.

## ITT in numbers

# 146

Years of experience

# 14

Companies

# 46

Offices

# 696

Employees

# 4

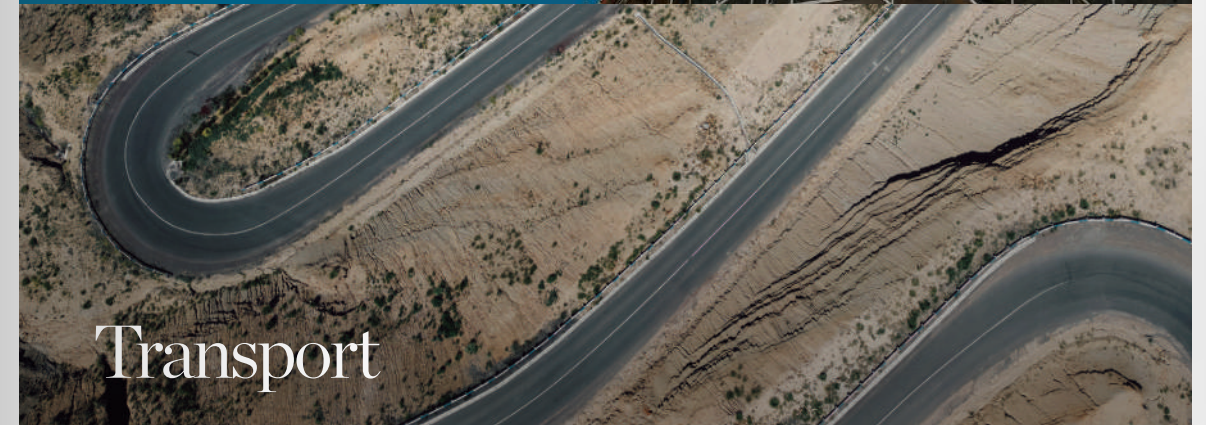
Countries



## Agriculture



## Construction



## Transport



## Industry

# Group companies

**ScalTT**

Transport

Official distributor of trucks, buses and coaches, semi-trailers, load handling equipment and heavy haulage equipment.

**ITT  
CM93**

Agriculture  
Construction  
Industry

Official distributor of farm machinery and construction, public works, industrial, maintenance, environmental and recycling equipment.

**ITT  
Dynamics**

Agriculture  
Construction  
Industry

Official distributor of construction, public works, recycling and farming machinery and accessories.

**ITT  
Canarias**

Agriculture  
Construction  
Industry

Official distributor in the Canary Islands of construction, public works, environmental and recycling equipment.

**ITT  
Rent**

Agriculture  
Construction  
Transport  
Industry

Rental of farm and construction machinery and transport equipment in Spain and France.

**ITT  
Maroc**

Sale of spare parts and used equipment.

**ITT  
Recuperación**

Transport

Sale of refurbished original parts.

**ITT  
Mach10**

Agriculture  
Construction

Official distributor in France for the sale of construction, public works, environmental, recycling and farming equipment and machinery.

**ITT  
Vimo**

Agriculture

Official distributor of farm machinery in northern France.

**ITT.  
Cevit**

Agriculture

Official distributor of grape-harvesting equipment and implements.

**ITT  
Trading**

International sale and purchase of equipment and services.

**ITT.  
Cosecha  
Mecánica**

Agriculture

Sale of spare parts and equipment for agriculture and grape-harvesting in Chile.

**ITT  
BoxSolutions**

Transport

Phase-two bodies for trucks and transport vehicles.

**ITT  
PedroAzpeitia**

Agriculture

Official distributor of farm machinery in northern Spain.

# Our strength, our team

Employees at ITT

# 696

**ITT España**

# 501



**ITTFrancia**

# 165



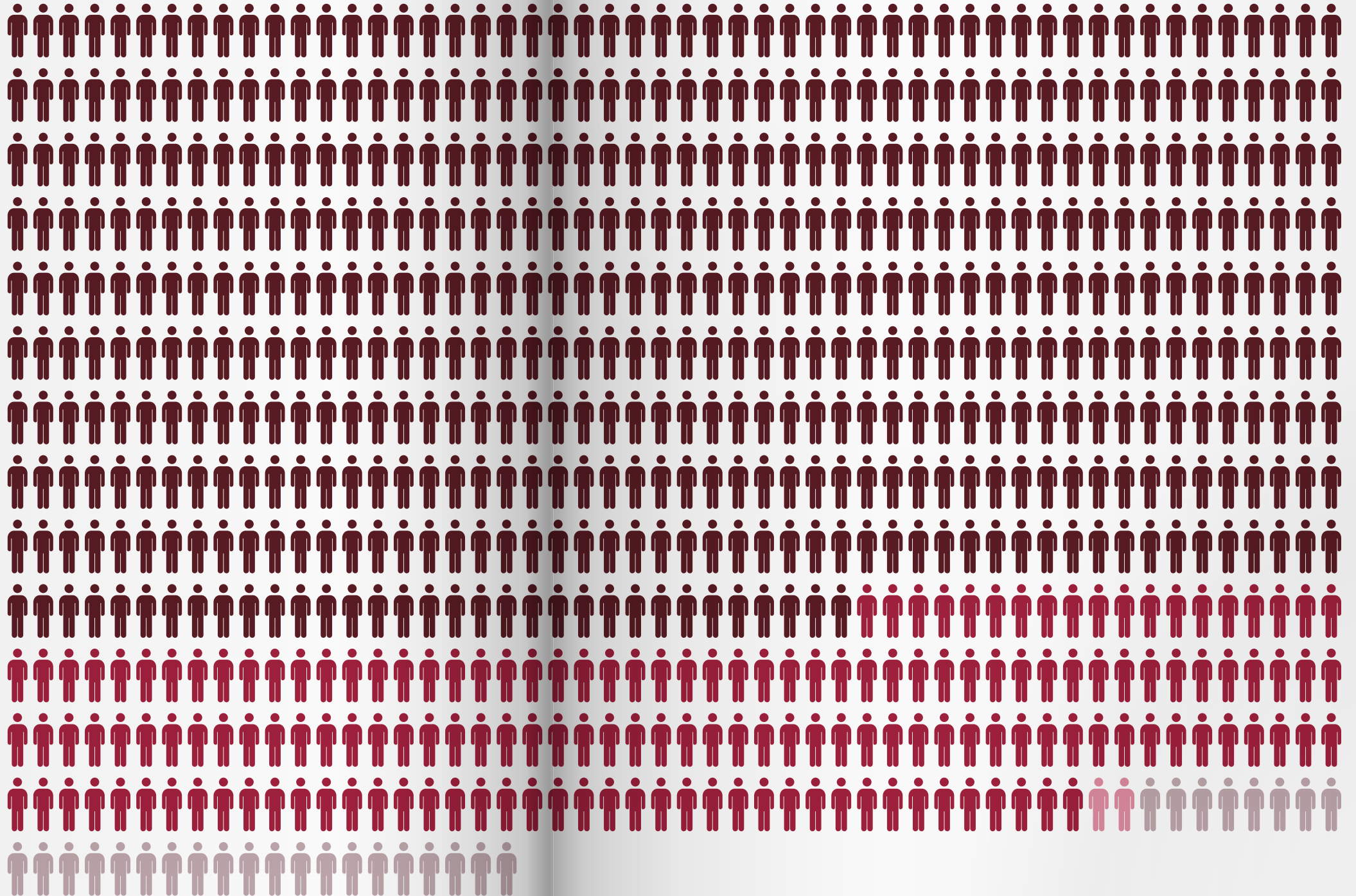
**ITTChile**

# 2



**ITTGambia**

# 28





# ITT in figures

# 363

Million euros  
in turnover in 2024

95  
Million euros  
in after-sales

# 5445

Machines sold in 2024

1639	1854	767	1185
Farm machines	Construction machines	Transport machines	Used machines

- ITT
- ScarITT
- ITT CM95
- ITT Dynamics
- ITT Mach10
- ITT Vimo
- ITT Rent
- ITT Canarias
- ITT Trading
- ITT PedroAzpeitia
- ITT Cevit
- ITT Recuperación
- ITT BoxSolutions
- ITT Cosecha Mecánica
- ITT Maroc



# Solutions



# Agriculture

## ITT CM93



## ITT Cevit



## ITT Vimo



## ITT PedroAzpeitia



## ITT Canarias



## ITT Cosecha Mecánica



## ITT Rent



New Holland tractor T7 315



Case IH Quadtrac



Solà planter Velox



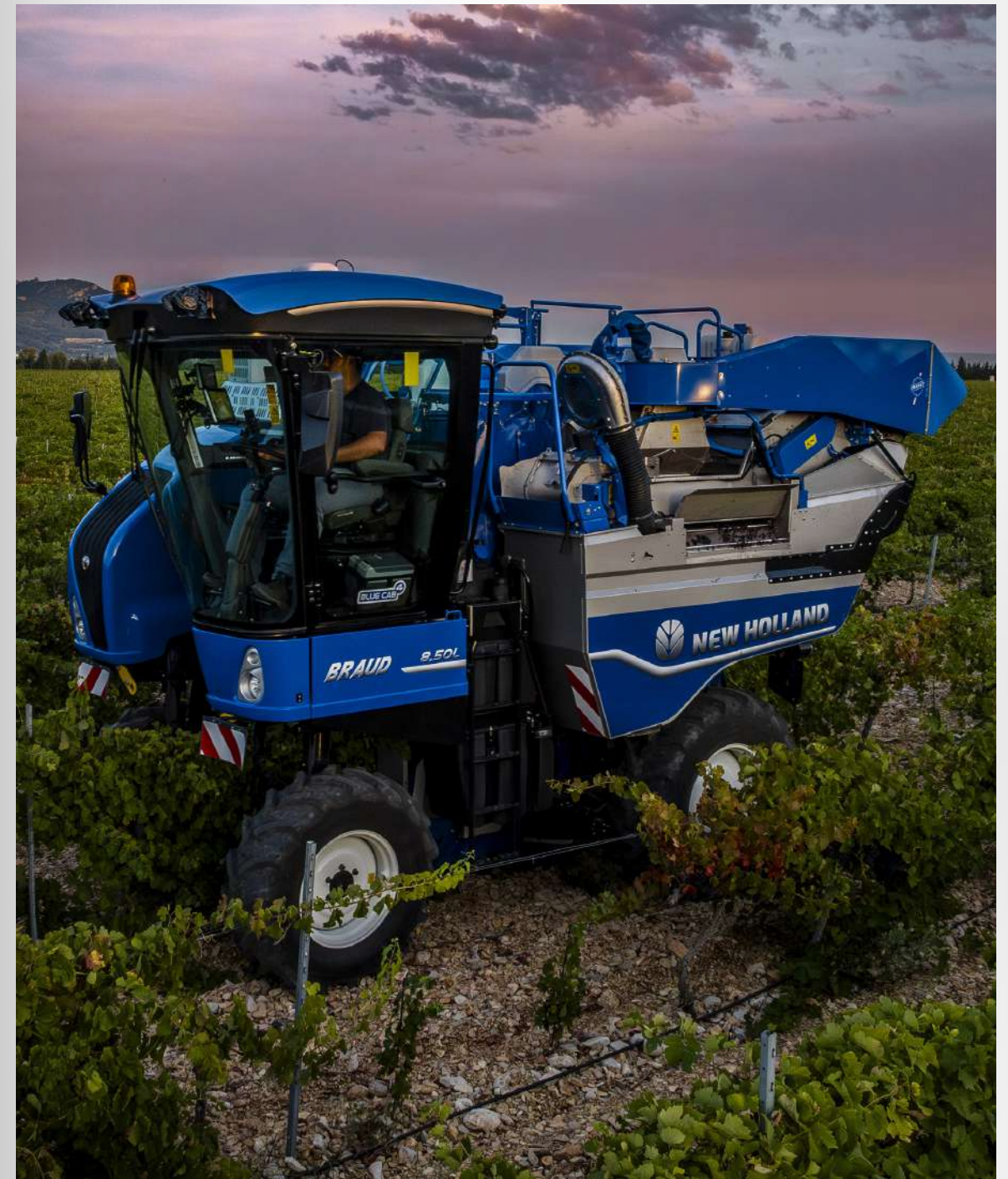
New Holland bigbaler 1290 Bigbaler High Density  
Horsch Versa 6 SW



Kuhn trailed sprayer Metris 4102  
Mañez y Lozano sprayer Twister Mega S6



New Holland grape harvester Braud 8



# Construction and recycling

## ITT CM93



## ITT Dynamics



## ITT Canarias



## ITT Mach10



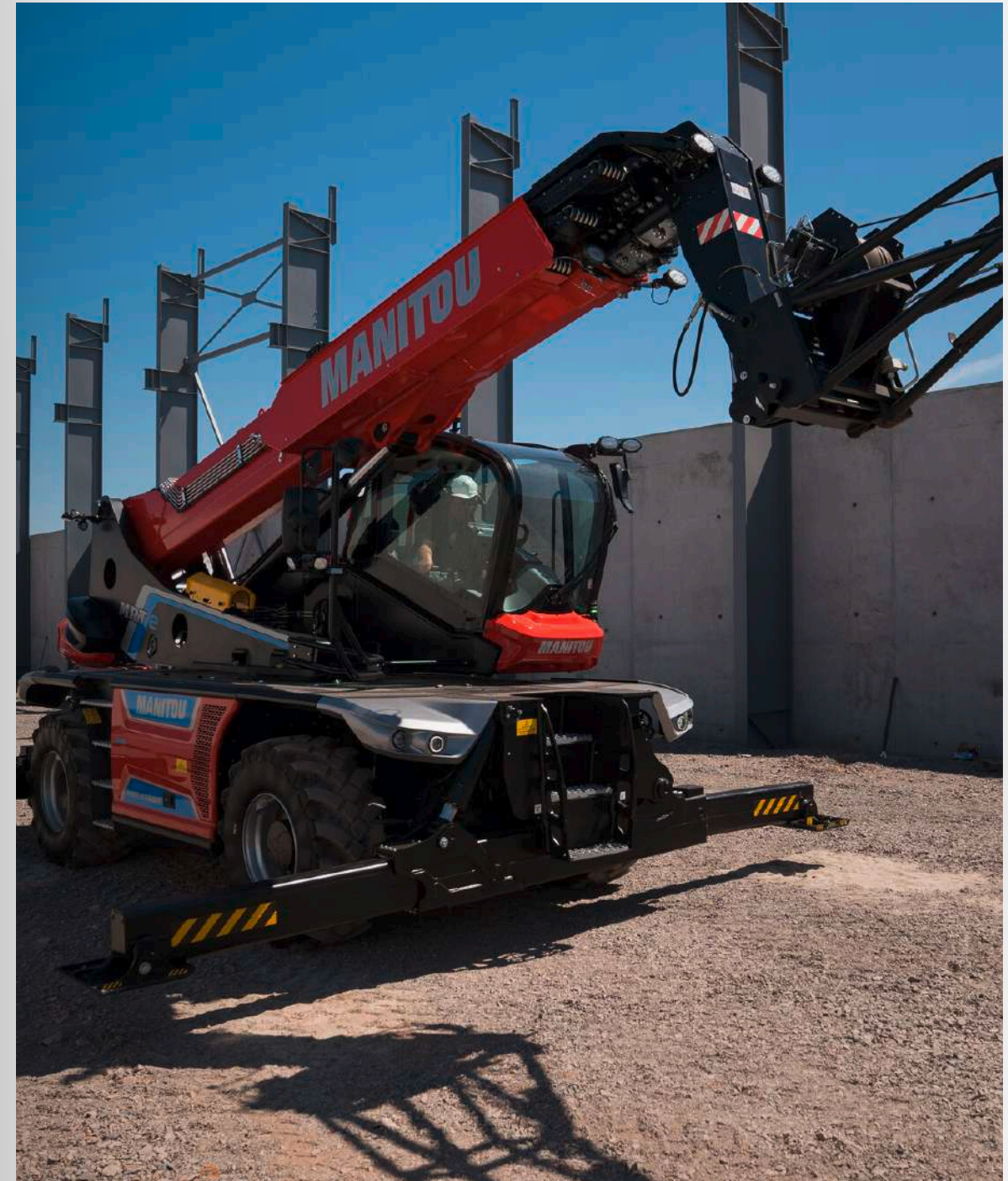
## ITT Rent



Case wheel excavator W 160E



Manitou telehandler MRT 2260





Bobcat excavator E88  
Ausa dumper electric D201 AHG



Develon wheel excavator DX100W-7



Corvus terrain electric EX4  
Putzmeister cement pump



Hamm compactor HC 160i  
Atlas Copco QAS 5 100



# Transport and logistics

**Scania**



SCANIA



SCHMITZ  
CARGOBULL

ROLFO

ISUZU



TEMSA

HIAB

**ITT**  
Recuperación



SCANIA



Scania Super



Schmitz Cargobull tipper trailer SKI SOLID



Scania coach Touring  
Temsa coach



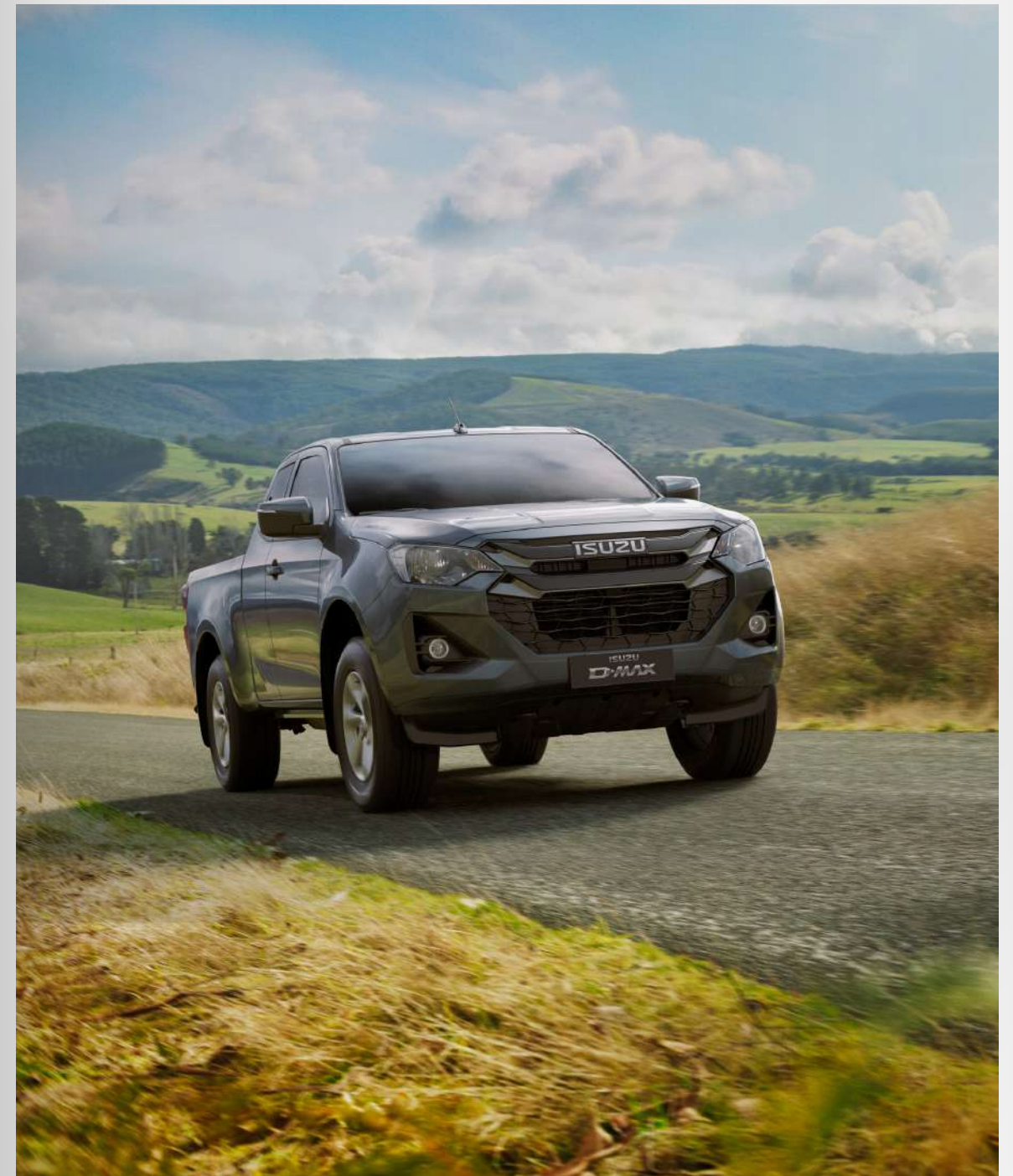
Isuzu M27  
Rolfo EGO 637



Hiab X-HiDuo 062



Isuzu pick-up D-MAX N60



# Industry, maintenance and elevation

---

**ITT**  
**CM93**

**MANITOU**  **Bobcat**

---

**ITT**  
**Dynamics**

 **Bobcat**

---

**ITT**  
**Canarias**

 **Bobcat**

---

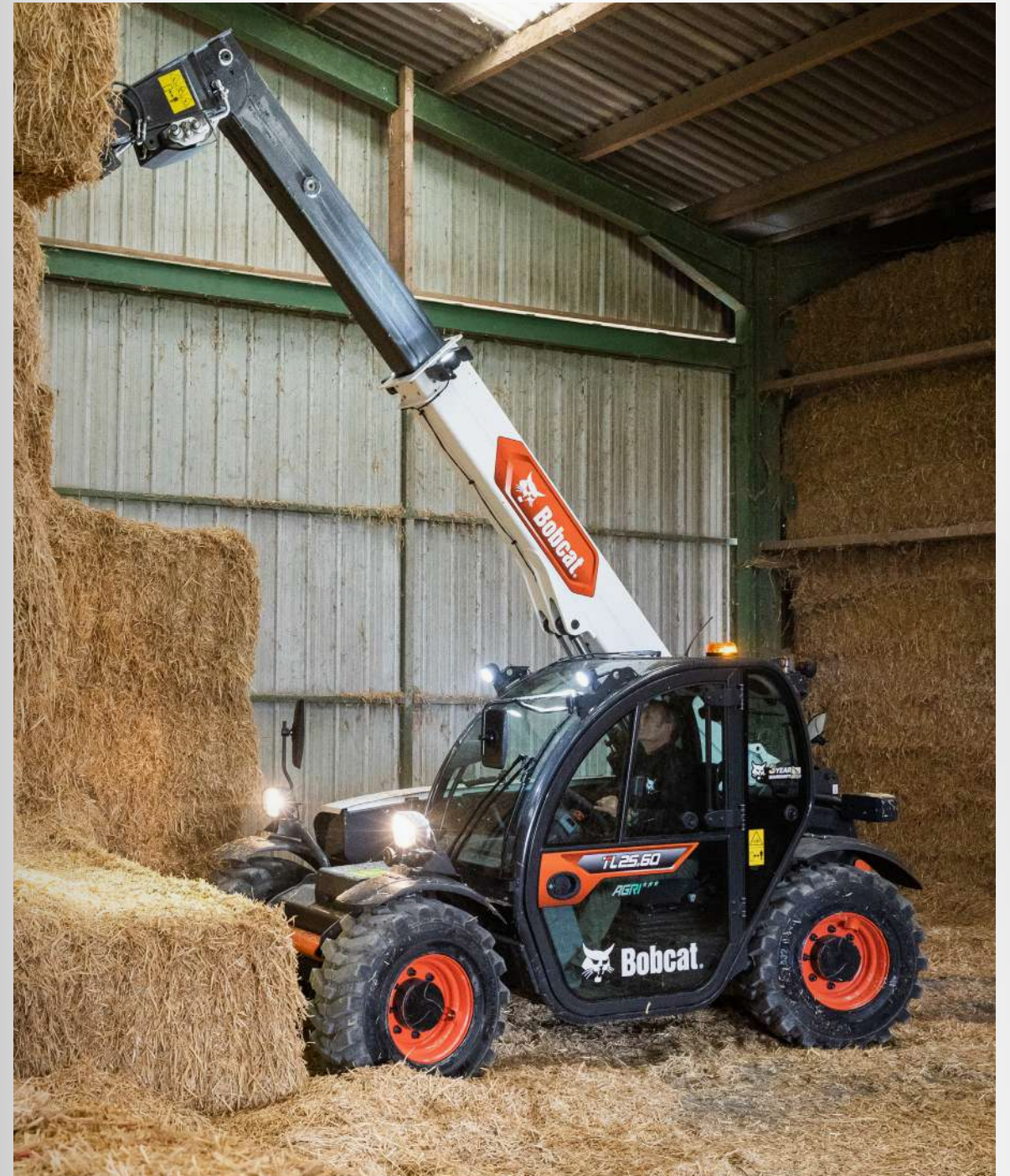
**ITT**  
**Rent**



Manitou forklift MI25D



Bobcat telehandler TL25.60





Manitou forklift ME 316



Manitou rotating telehandler MRT2260  
Bobcat compact wheel loader L85



# ITT Rent

Rental of farm, construction and public works machinery and industrial equipment for the transportation, environmental and energy sectors.

+1220  
Machines rented

Spain

17,6  
Millones de euros  
facturados

1030  
Machines rented

France

3,2  
Million euros  
in turnover

190  
Machines rented



# News



Here are some of the new developments that have strengthened our company's business over the past year.



**ScaITT acquires Talleres Navarro Deix, S.A.**

ScaITT reached an agreement to incorporate Talleres Navarro Deix, S.A. into the structure of its business. This makes for a more complete and efficient service offering in the Manresa area. It joins our other four locations in Martorell, CIM Vallès, Lleida and Palma de Mallorca.



**New ITT Vimo location in Sissonne**

ITT Vimo opened a new farm machinery distribution facility. This new location can be found at 10 Rue de la Proche Ville, 02150 Sissonne, France and measures some 1,400 m2.



**ITT DYNAMICS**

ITTBobcat Of changed its name to ITT Dynamics. The start of a new beginning.o.



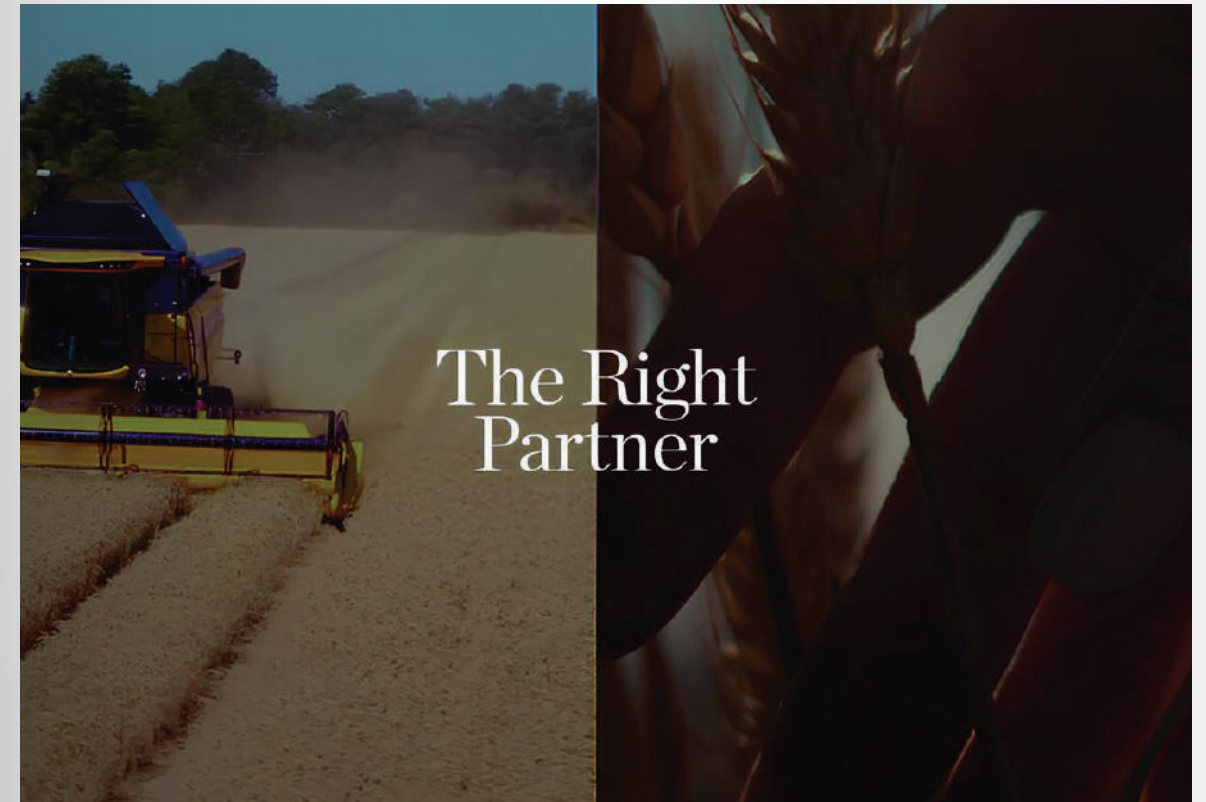
**New retail agreement with CNH**

We are pleased to announce that ITT CM93 has signed an agreement with CNH to drive the expansion of two major agricultural brands, New Holland and Case IH, in the Canary Islands, the Balearic Islands and southern Spain.



**ITT Pedro Azpeitia opens two new locations**

One in Tafalla at Polígono Industrial la Nava S/N and the other in Tudela at Polígono Las Labradas, C/ Comarca Foral de Navarra 25.



**New ITT corporate website**

Featuring a fresh, modern design, this update reflects who we are and what we value. The new design, including an intuitive menu, makes it easier to browse the site and quicker and simpler to find whatever you need.



**New Holland Seville harvesting equipment**

ITT CM93 signed a partnership agreement with Seville-based New Holland dealer Carmona Ballesteros, S.L. to improve customer care and response quality for harvesting equipment in Seville.

# Commitment



# ITT Gambia

Working to improve the conditions of socially disadvantaged groups with projects in Spain and The Gambia.



## History and mission

At ITT Gambia, we are passionate team that believes in the transformational power of education, community and cooperation. What began as efforts to carry on the projects of an NGO that could no longer operate has become a mission to improve lives in The Gambia.

Ever since we began managing two schools in The Gambia, we have worked tirelessly to offer quality education to more than 300 students, ensuring that each child receives a nutritious meal every day and access to resources for his or her personal development. Our focus centers around the 28 Gambian employees who form our team. They leverage their experience and knowledge of the country to lead the initiative and carry out the bulk of its activities.

We also work on projects to improve the environment, support local communities and empower women as well as specific programs for adolescents.

## Local team

The heart of ITT Gambia is its local team. We have an extraordinary group of teachers, cooks, women's associations and community leaders who work day after day to make our work on the ground possible. From the classroom to the gardens, their involvement is crucial for carrying out our projects.



Help us improve the lives of many children. Become a member of ITT Gambia. [www.ittgambia.org](http://www.ittgambia.org)



**2**  
Schools

**+300**  
students

**4500**  
Plates of food  
per month

**28**  
Employees

**+900**  
Beneficiaries



# Sustainability

Our focus. The impact we achieve. We are committed to working towards a safe and sustainable future. Doing business responsibly is one of our core values and is an essential point of reference for us all, from our employees and customers to our suppliers and society at large.

In order to make a true and transformational difference, sustainability needs to be an ongoing, scalable and measurable effort on the ground. We see it as a journey, not a destination. We work to instill an impact-driven mindset that enables our employees to understand and integrate environmental and social factors into every business decision. This focus reflects our commitment to contributing to the UN's sustainable development goals and underpins our growth strategy as a company.

## Environmental

The climate clock is ticking. We are making extensive efforts to minimize our environmental footprint, reduce our emissions and mitigate climate risks.



## Social

We are a responsible company. We strive to be an inclusive company and an exemplary partner, promoting the highest levels of sustainability, transparency and social performance.



## Governance

Sustainability is represented at all levels of our governance, driving the level of change needed to make us a truly sustainable company. We address improvements to our environmental and social footprints by taking action across all our operations and partnerships.







International  
Trucks  
& Tractors

T. +34 680 18 78 00  
info@itt1878.com  
www.itt1878.com



